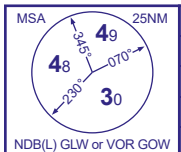


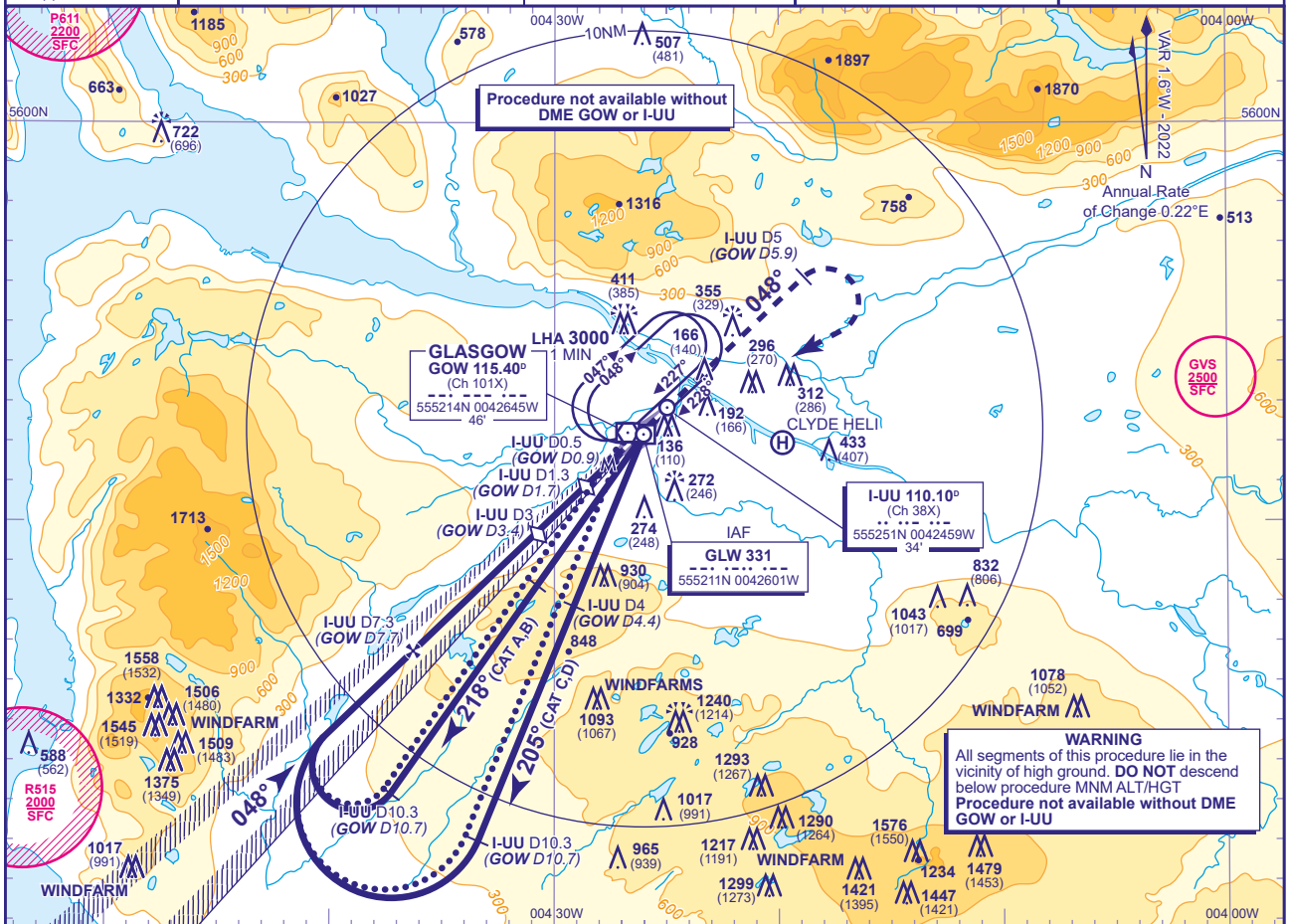
# INSTRUMENT APPROACH CHART - ICAO

**GLASGOW**  
**LOC/DME/**  
**VOR or NDB(L)**  
**RWY 05**  
(ACFT CAT A,B,C,D)



APP	119.100	GLASGOW APPROACH	AD ELEVATION	26
TWR	118.805	GLASGOW TOWER	THR ELEVATION	26
	121.705	GLASGOW GROUND	OBSTACLE ELEVATIONS	1576 AMSL (1550) (ABOVE THR)
RAD	119.100, 125.250, 128.755	GLASGOW RADAR		
ATIS	129.575	GLASGOW INFORMATION	BEARINGS ARE MAGNETIC	

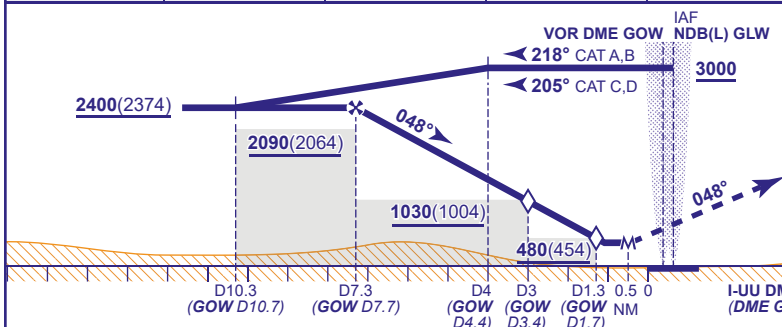
TRANSITION ALTITUDE  
**6000**



## RECOMMENDED PROFILE Gradient 5.24%, 318FT/NM

DME I-UU(GOW)	7(7.4)	6(6.4)	5(5.4)	4(4.4)	3(3.4) (SDF)	2(2.4)	1(1.4)
ALT(HGT)	2310(2284)	1990(1964)	1670(1644)	1350(1324)	1030(1004)	710(684)	400(374)

Arrival **not below MSA** (see note 2).  
Shuttle in hold if necessary.



**MAP1 I-UU DME 0.5 (GOW DME 0.9)**

Continuous climb to 3000. Initially, straight ahead to 3000 or I-UU DME 5 (GOW 5.9) whichever is earlier, then right turn to NDB(L) GLW or VOR GOW at 3000 or as directed.

Note: Aircraft which have not achieved 2000 by I-UU DME 5 (GOW D5.9), turn right (at I-UU D5) onto track 095 until passing 2000 then turn right to NDB(L) GLW or VOR GOW at 3000 or as directed.

Aircraft Category	A	B	C	D	Rate of descent	G/S KT	160	140	120	100	80
OCA (OCH)	Procedure	370(344)	370(344)	370(344)	370(344)	FT/MIN	850	740	640	530	420
VM(C)OCA (OCH AAL)	Total Area	800(774)	800(774)	1400(1374)	1700(1674)						

## ALTERNATIVE PROCEDURE (FROM VOR GOW HOLD)

As for main procedure except fly outbound baseturn on GOW VOR R217 (CAT A,B), R204 (CAT C,D).

**NOTE 1** Aircraft commencing the procedure from the hold will normally do so from **not below 4000**.

**NOTE 2** Position overhead holding fixes according to inbound routing as cleared by ATC. The normal cleared altitude at the respective terminal fix is **7000**. As this altitude is above the Transition Level, aircraft will be instructed to fly the appropriate flight level.

**NOTE 3** Arrivals may be radar vectored by ATC from or before the appropriate terminal fix directly into the intermediate/final approach track.

CHANGE (7/23): VOR GOW RECALIBRATED. VOR GOW HOLD. ALTERNATIVE PROCEDURE OUTBOUND RADIALS.